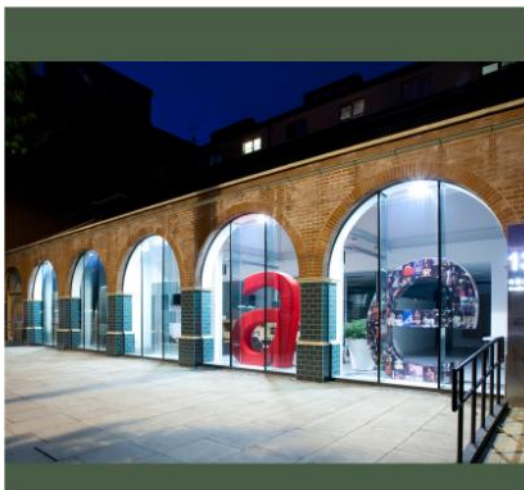
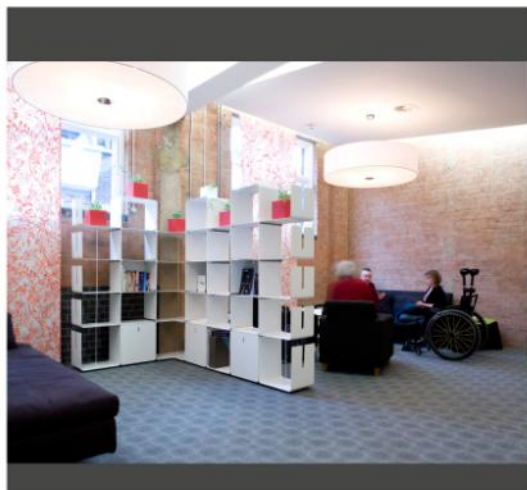
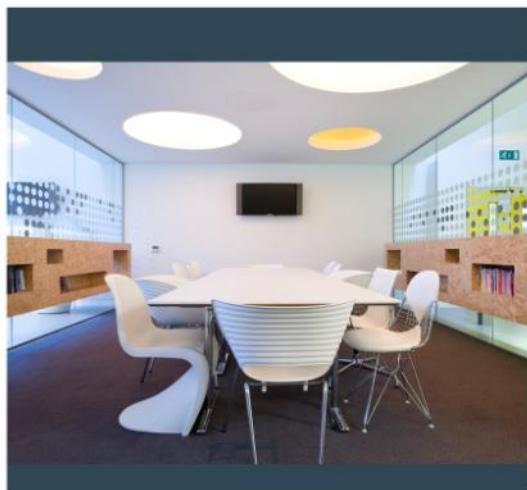


# GRAEae

THEATRE COMPANY



H I R E S   B R O C H U R E   2 0 1 1



## Bradbury Studios

Bradbury Studios opened its doors in 2009. Since then, thousands of people have enjoyed its facilities, as one of the few fully accessible rehearsal spaces, offices and work-spaces in the UK.

Thanks to a major fundraising drive we were able to raise the money needed and, with **Artillery Architecture & Interior Design** and **Paragon Management**, to develop the site into a visible model of inclusive creative practice.

The Grade II listed building has been transformed from its former use as a horse stable and tramshed for the old Hackney Omnibus into an urban, fully accessible space. It has been designed to be welcoming, creative, inspirational and an enjoyable place to work.

Details on how to book and how to find us are on page 11.

## About Graeae

Graeae is a force for change in world-class theatre, presenting a unique approach which:

- Boldly places disabled artists centre-stage in a diversity of new and existing plays
- Pioneers a radical dramatic language by exploring the “aesthetics of access”, creatively embedding a range of tools such as audio description and sign language from the very beginning of the artistic process
- Explores new territory and theatrical genres – from contemporary classics to musicals, to outdoor circuit... with sway poles and giant puppets!

Graeae champions the inclusion of Deaf and disabled people in the arts through:

- Intensive actor and writer training initiatives
- Access support for creative and learning situations
- Empowering workshops for young artists, led by inspiring role models
- A range of training models for the creative sector – from inclusive practice for drama schools, through to accessible e-marketing for theatre venues



Regional and National winner in the *Best Office under 2000m<sup>2</sup> category*, British Council for Offices Awards 2010





THEATRE COMPANY

## Room hire

We have two spaces for hire in the Bradbury Studios:

### **Rehearsal Space**

**Page 6**

A modern, adaptable space with near blackout facilities. This soundproofed room offers great acoustics, a high specification lighting and sound rig, sprung floor, dance mirrors, changing facilities, toilet and shower. We can provide seating and tables for up to 30 people, and hire of the room includes access to our networking area and tea point.

### **Creative Hub**

**Page 7**

A versatile space offering good natural light that can be used for meetings, workshops or presentations. The room is furnished to superb quality with a diverse array of seating from top designers. Use of a 40" plasma or projector is also available upon request.

### **Equipment Hire**

**Page 9**

We have a range of static equipment (which can be hired out during your room hire) and touring equipment (which can be hired out independently). We are able to offer items from mixing desks to audio description kits.

### **Hire Rates**

The hire rates in this booklet are our charity rates and charities are given priority booking. VAT is charged at 20% on top of all prices in this brochure.

Hirers will need to provide proof of own insurance - PLI for room hires, van insurance for vehicle hires.

All prices are correct at time of print (June 2011).

## How to book

Contact Kevin Walsh, Building and Facilities Manager, on **020 7613 6900** or **kevin@graeae.org** stating:

- Which space or item of equipment you are interested in
- The dates and times of the requested hire
- Whether any additional items need to be booked (e.g. projector for rehearsal room hire or 3 seater cab for van)
- Whether you represent a charity.

## Rehearsal room

### Included in the hire:

- 10.7m x 8.5m space with high ceiling
- Fully sprung vinyl harlequin floor
- 8 portable dance mirrors if required
- A light and airy space offering natural light with near blackout facilities if required
- Adapted as per your requirements (with tables as required and up to 30 chairs), access to changing rooms, toilets, showers and kitchen area
- Free WiFi access
- Use of induction loop
- Breakout area

### Also available (charged separately):

- Use of state-of-the-art accessible lighting rig and mixing desk
- Use of sound system, wireless microphones, and mixing desk
- Link-up with projector or TV
- Audio description system (up to 20 users)
- Hire of additional chairs (room can fit up to 100 people in rows)
- Catering (book 7 days in advance)
- Event coordination
- Technician
- Full office support
- Use of facilities out of office hours



## Rehearsal room prices

Daily rate	£310	Lighting rig / desk	£50 pd / £150 pw
Weekly rate (Mon-Fri)	£875	Sound system	£30 pd / £100 pw
Weekly (Mon-Sat)	£1,080	Projector / TV	£30 pd / £100 pw
Weekly (Mon-Sun)	£1,340	Flipchart + pad	£15 pd / £50pw
After 6pm	£45 ph (week)* £50 ph (Sat)*	Tea & coffee	1-15 £1pp 15-40 80pp
Technician	£140 pd (week) £180 pd (Sat)	Lunch	From £7pp

\* as an extension of a full day booking

## Creative hub

### Included in the hire:

- 7m x 4m meeting room
- A light and airy space offering natural light and good acoustics
- Adapted as per your requirements. The room houses up to 4 tables and up to 15 chairs
- Access to tea-point area
- Free WiFi access
- Full heating, ventilation and air conditioning
- Use of portable induction loop
- Breakout area

### Also available

#### (charged separately):

- Audio description system (up to 20 users)
- Projector / TV screen
- Conference Calling
- Catering (book 7 days in advance)
- Printing / photocopying / scanning / faxing / Brailleing / CD/ DVD authoring facilities
- Use of facilities out of office hours

## Creative hub prices

Hourly rate	£36
Daily rate (mon-fri)	£185
Use of projector / TV	£30 pd
Printing / photocopying	5p A4 b/w 10p col or A3
Calls & fax:	At cost + 25%
Scanning to e-mail	5p a scan

Brailleing	50p per printed sheet
Tea & coffee (reductions for larger numbers)	£1pp

Please ask for a catering brochure if required.

Day rate for both rooms is for 8 hours. 10am-6pm unless otherwise arranged.





## Van hire

### LWB Mercedes Sprinter panel van with cab

This can be adapted to accommodate 3 or 6 people. The load area is up to H:1.83m, W: 1.73m, L: 4.15m. The length reduces to about 2.5m when the 3 person cab is added. GVW: 3.5t



### MWB Mercedes Sprinter accessible minibus

This can be adapted to accommodate 6 or 8 people. 2 seats can be removed to allow for wheelchairs (straps and seatbelts can be provided for wheelchair users that choose not to transfer to a standard seat). The van has a step to the side and electric lift to the rear.



LWB van	£300 per 7 days
MWB van	£270 per 7 days

## Equipment hire

- **Audio description kit** — Graeae has a portable audio description kit which can accommodate up to two transmitters on separate frequencies and up to 20 receivers. The equipment works on rechargeable batteries (provided). Audio Aide
- **Projector** — We have a performance quality projector with wide angle lens. Infocus LP850, 4500 lumens.
- **Production mixer** — A basic but functional analogue video mixing desk. Panasonic Production Mixer WJ—MX30

### Audio description system

1 transmitter + 1 receiver	£50 per 7 days
2 transmitters + 20 receivers	£300 per 7 days
Projector	£250 per 7 days
Production mixer	£120 per 7 days

## Terms

- All rates are exclusive of VAT
- You must provide your own insurance. Proof needed when booking.
- All hires must be paid for in advance
- Vans are also subject to a deposit of £300.





## Contact details

### Graeae Theatre Company

Bradbury Studios, 138 Kingsland Road  
London E2 8DY

Phone: 020 7613 6900  
Fax: 020 7613 6919  
E-mail: [info@graeae.org](mailto:info@graeae.org)  
Web: [www.graeae.org](http://www.graeae.org)

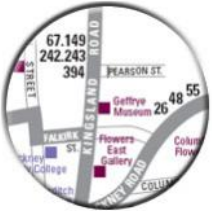


## Access by rail and tube

15min walk or bus 243 from **Old Street** Exit 2.  
20min walk or 242 bus from **Liverpool Street**  
20 minute walk or 67, 149, 243 bus to **Dalston Kingsland**

## EAST LONDON LINE—Now open

**Hoxton Station**—Connects with Highbury and Islington, New Cross, West Croydon and others



## Bus services

67, 149, 242, 243, 394 on Kingsland Road  
Alight at Geffrye Museum Stop  
26, 48, 55 on Hackney Road  
21, 76, 141, 271 on New North Road



## Disabled access

The building features:

- Full wheelchair access
- Accessible toilets
- Changing facilities
- Hoists
- Induction loop system (rehearsal & meeting room),
- On-street blue badge parking (3 hours on Kingsland Road between 10am and 4pm, unlimited at meter parking in Pearson Street), dropped kerb (expected 2010)

If you would like information on any of the above please contact [kevin@graeae.org](mailto:kevin@graeae.org)

This brochure is also available  
in large print or Braille  
Call 020 7613 6900  
or e-mail [access@graeae.org](mailto:access@graeae.org)

Bradbury Studios is the  
winner in the "Projects up  
to 2000m<sup>2</sup>" category of the  
British Council for Offices  
Awards 2010, London and  
National.



## **Graeae Theatre Company Ltd**

Bradbury Studios  
138 Kingsland Road  
London  
E2 8DY

Phone: 020 7613 6900

Fax: 020 7613 6919

E-mail: [info@graeae.org](mailto:info@graeae.org)

Website: [www.graeae.org](http://www.graeae.org)

Artistic Director: Jenny Sealey

Executive Director: Judith Kilvington

Registered Charity Number:

284589

Registered in England & Wales No.:

1619794

VAT No:

628 4448 20



**June 2011 Edition**